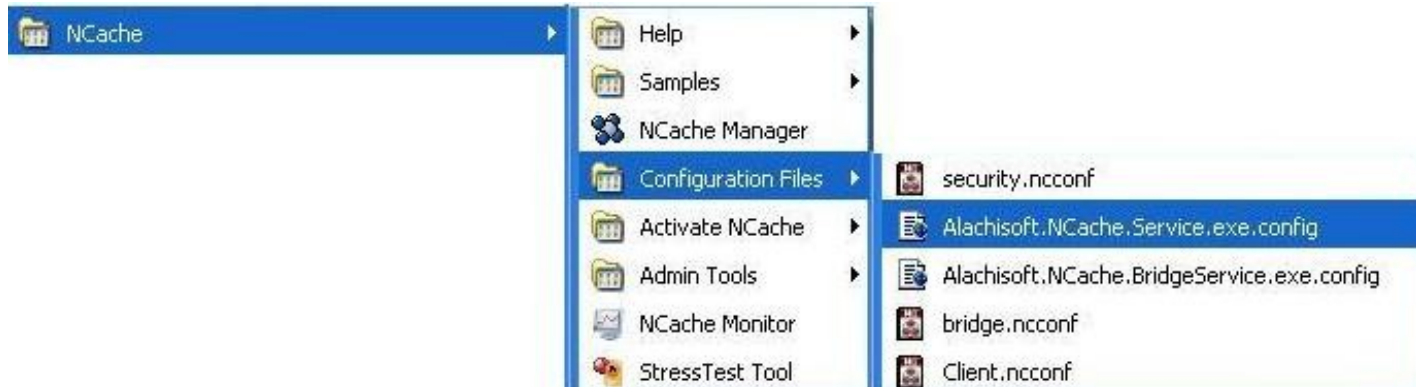


## Auto starting cache on Windows startup

NCache can be configured to automatically start a cache on Windows startup. This is done by specifying a cache Id in the NCache Service configuration file.

To configure a cache to start automatically on system startup, follow these steps.

1. Open file Alachisoft.NCache.Service.exe.config from Start->All Programs->NCache.



2. Add a single or comma separated multiple cache-Ids in the NCacheServer.AutoStartCache property.

[xml]

```
<add key="NCacheServer.AutoStartCache" value="myCache,myReplicatedCache"/>
```

In the above xml, myCache and myReplicatedCache are configured to start automatically on system startup. If you need to use different cache names, replace these values with the cache names that you have created.

### Notes:

1. The above settings will take affect on the NCache Service or Windows restart. As the NCache service starts automatically when Windows starts, the auto start feature will automatically run at that time.
2. Restarting NCache service will disconnect the already connected users to cache.

Please feel free to contact us at [support@alachisoft.com](mailto:support@alachisoft.com) if you have any problems using NCache.