

Alachisoft

NCachePoint

NCachePoint Installation Guide

Table of Contents

Hardware Requirements.....	3
Software Requirements	3
NCachePoint Editions.....	3
NCachePoint Installation.....	4
License Expiration & Activation.....	9

Hardware requirements

The Server on which you install NCachePoint should meet the following hardware requirements. The following table lists minimum hardware requirements.

Requirement	Minimum
Processor	Pentium IV - 2.0 GHz
RAM	1 GB
Hard Disk	NTFS file system formatted partition with minimum of 32 MB free space.
Video	1024 x 786, High Color
Network	100Mbps for connections between computers in a Server Farm.

Software requirements

The Server on which you install NCachePoint should meet the following software requirements.

Component	Requirement
Operating System	Any edition of Windows Server
Browser	Internet Explorer 6.0 with most recent service packs or later versions
Windows Components	<p>You must configure your computer to be a Web server by enabling IIS 6.0 or higher, including:</p> <ul style="list-style-type: none">• SMTP• Common Files• WWW <p>Note: You should run the IIS worker process in the isolation mode.</p>

Add-on	Windows SharePoint Services (WSS) 3.0 SP1 / SP2
Command-Line Shell (Optional)	PowerShell.
Software framework	Microsoft .NET 3.5

NCachePoint Editions

NCachePoint has following three editions:

1. Express

The Express edition of NCachePoint will only install on machine where Windows SharePoint Services (WSS) is installed.

2. Standard

To install Standard edition of NCachePoint, you need to have WSS or Standard edition of MOSS installed on the machine.

3. Enterprise

The Enterprise edition of NCachePoint can be installed on machine with any edition of MOSS or WSS installed.

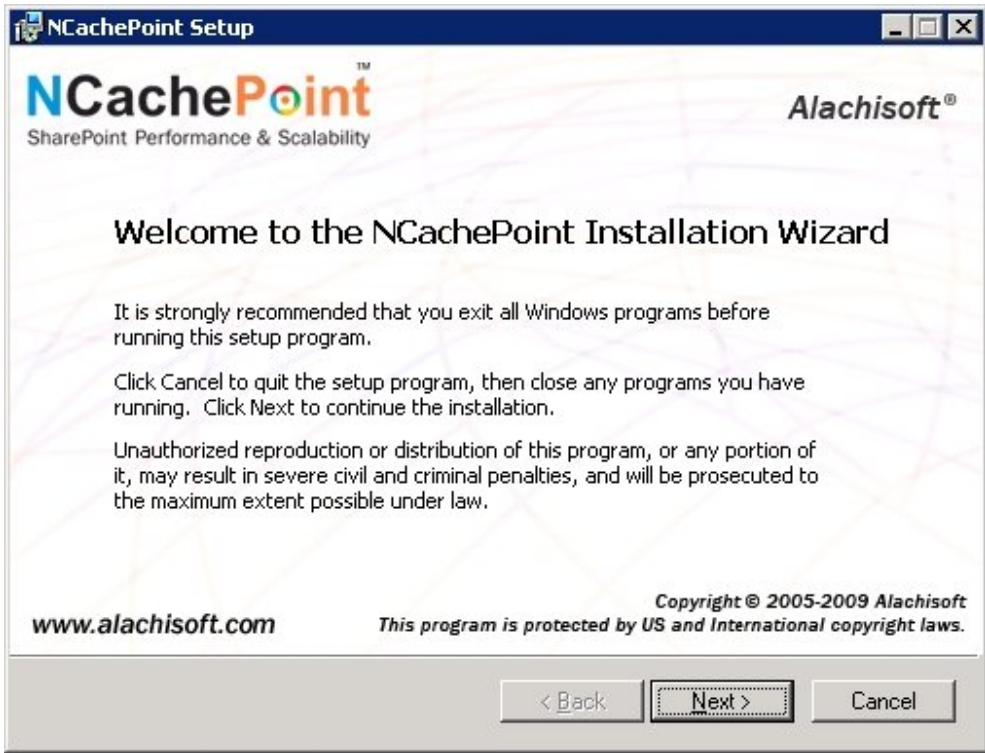
NCachePoint Installation

This section will take you through to the complete process of installing NCachePoint on your machine.

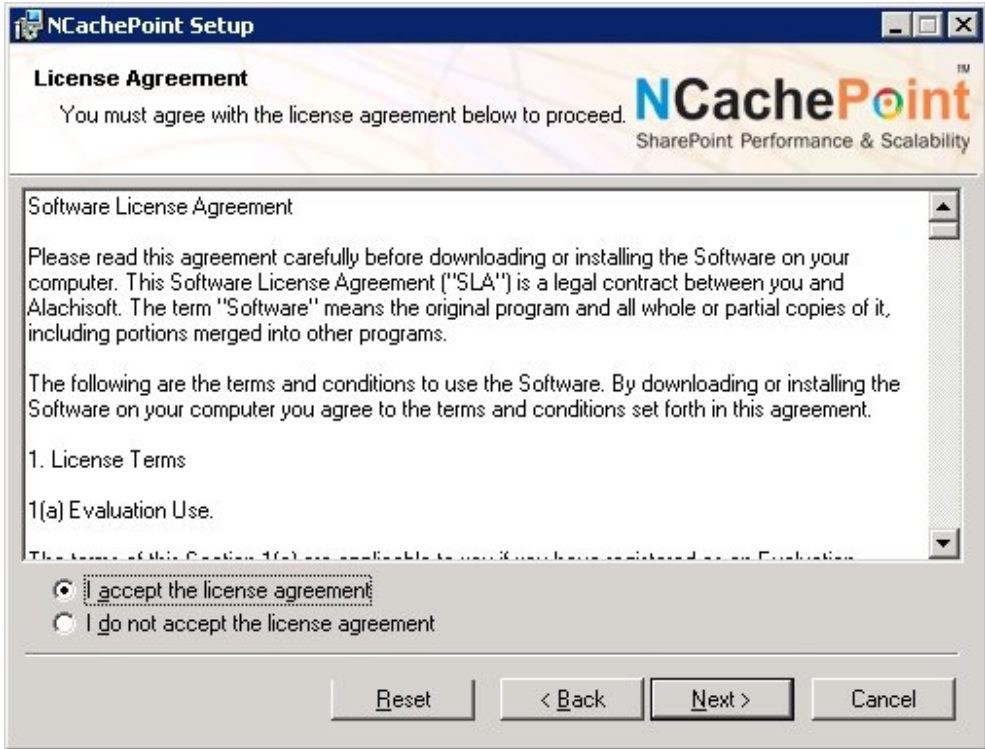
Note: It is assumed that you already have read and fulfilled the hardware and software requirements for the install.

To install NCachePoint on your machine, here are the steps:

1. Double-click on the NCachePoint setup file; you will see a Welcome screen. Click on the Next button on the window to proceed.

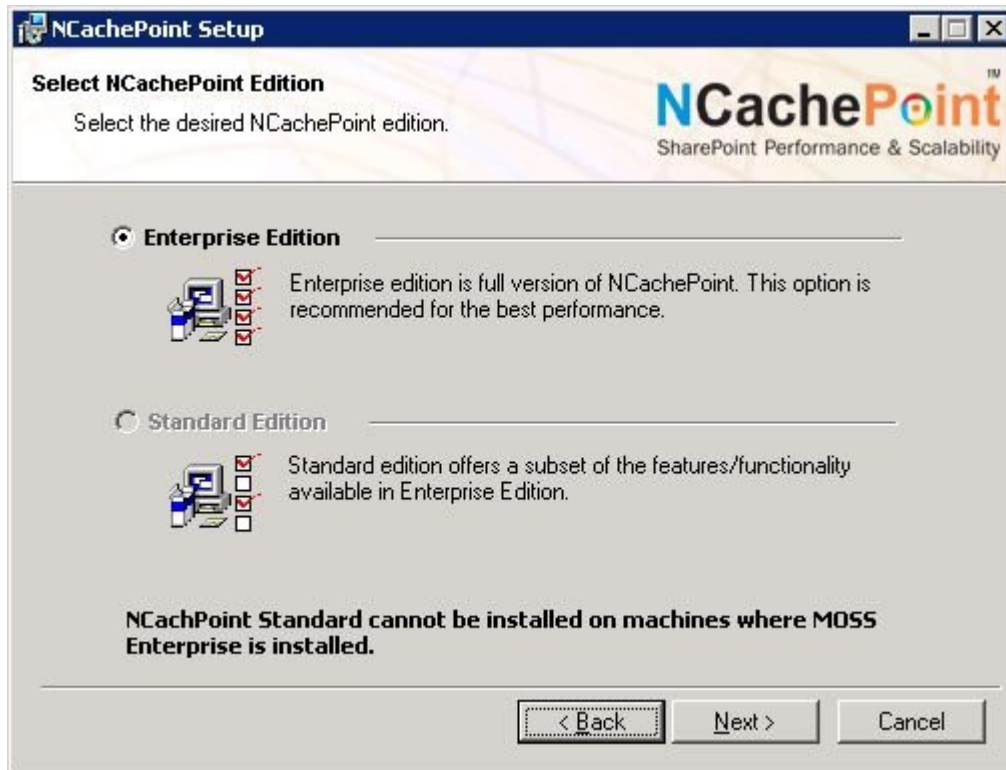


2. On the next screen, you must read and agree to the Software Licensing Agreement in order to proceed with the installation. Select the option shown to accept the agreement if you wish to proceed then click Next.

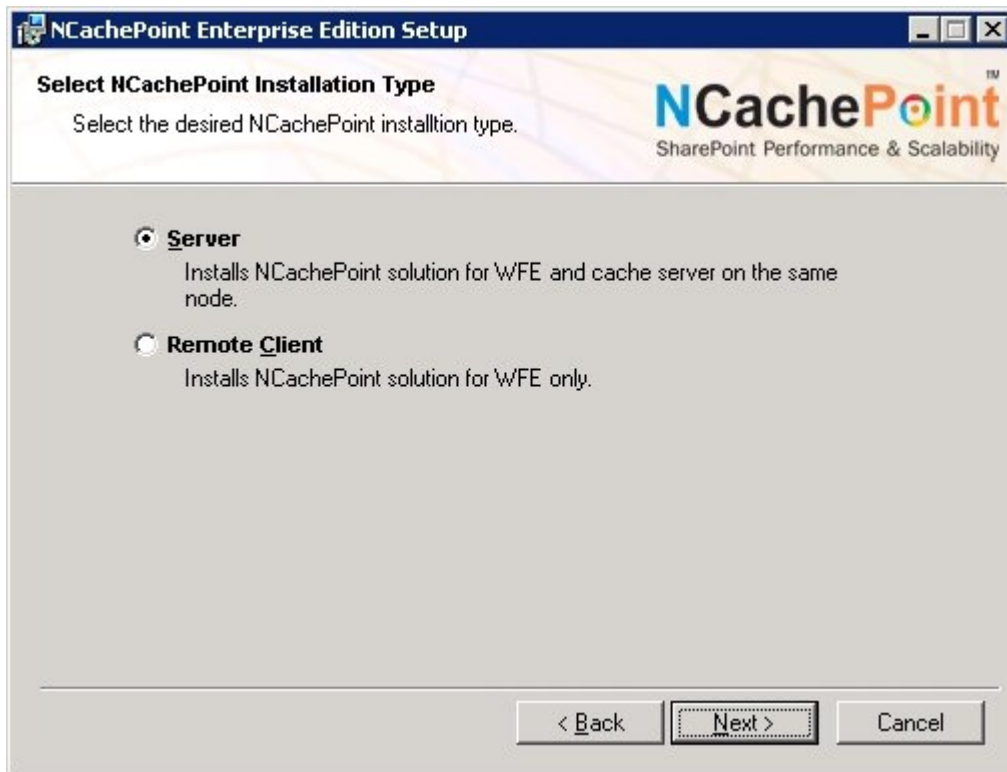


3. Select your desired NCachePoint edition then click Next.

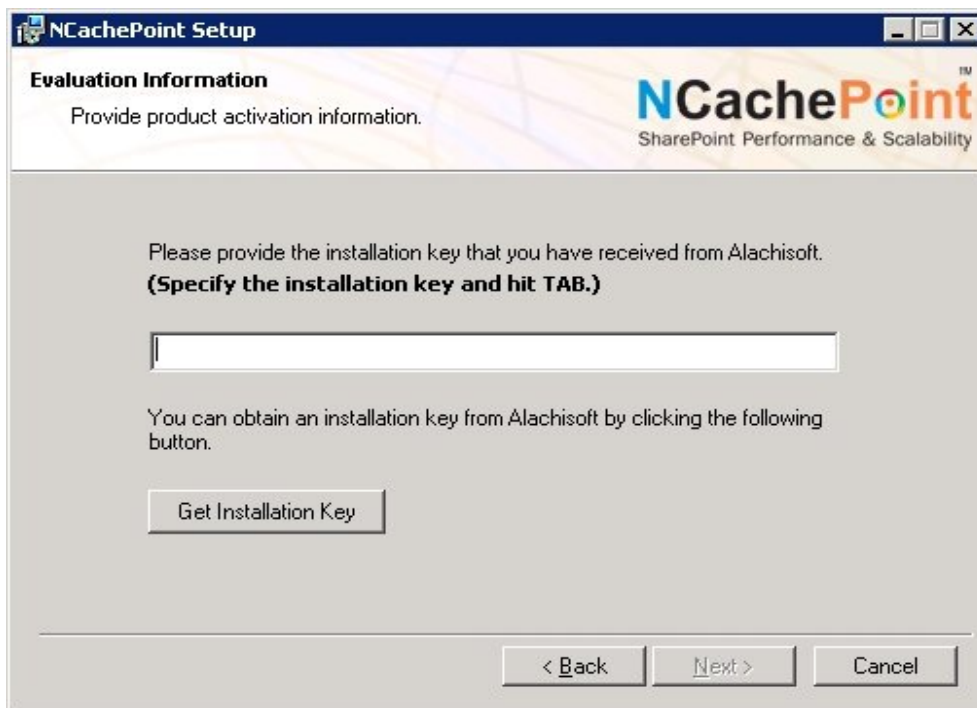
Note that you can not install Standard Edition of NCachePoint on machines where MOSS Enterprise is installed.



4. Select the desired installation type. Select Remote Client to install NCachePoint solution for Web Front End (WFE) Server only or select Server to install NCachePoint for WFE Server and cache server on the same node.



5. The next screen will allow you to enter the installation key that you have already received with the NCachePoint download from Alachisoft.com. If you don't have the key, click the Get Installation Key button and you will be directed to the Alachisoft website where you can obtain the installation key. Click the Next button after entering the key.



6. In the next window, enter your name, organization name and the email address then hit the Tab key on your keyboard then click on Next.
7. The next window will let you select disk location where you wish to install NCachePoint; you can also leave it as default. After setting the location, click Next.
8. Click Next again on the next screen and the installation will begin.
9. The install process will perform a check to determine whether NCachePoint can be installed on your machine. If all checks are successful, click the Next button to continue.
10. On the next screen you will be shown Web Applications, select the ones that you wish to install then Click Next.
11. When the window with the installation completion message appears, click on the Close button and the Configure EBS Database window will appear:

Configure EBS Database ? X

NCachePoint™

NCachePoint uses a database for storing EBS related information like BLOB index, encryption providers and storage providers. You can choose an existing database or create a new blank database for EBS and this tool will automatically create tables using the specified credentials.

Note: These credentials are saved in SharePoint and used by EBS to access the database from IIS worker process (w3wp.exe) and SharePoint Timer Service (owstimer.exe).

Server Name: [Dropdown]

Authentication:

User Windows Authentication

User SQL Server Authentication (Recommended)

User Name: [Text Box]

Password: [Text Box]

Database Name: [Dropdown]

[Test Connection] [Create Tables]

Configuring EBS is an important step for creating tables for EBS in SQL Server. These tables store EBS BLOB Index, necessary for working of EBS.

In the Configure EBS Database window, enter Server Name, authentication details and the database you want to use. Then click on the Test Connection button to ensure that connection with database is possible. If a success message appears, click on the Create Tables button to create tables in SQL Server.

10. A window appears confirming the completion of NCachePoint install. Click on the Finish button to complete and exit the setup.

Important Note: Installation of NCachePoint must occur on each server node in the Web Farm.

License Expiration & Activation

By default, when you install Standard or Enterprise edition of NCachePoint, it is installed as an "Evaluation Copy" and is valid for 60 days. At the end of these 60 days, NCachePoint will stop working. The Express edition of NCachePoint is a free edition, therefore has no evaluation period.

Indications of NCachePoint Being Expired

1. The about page of NCachePoint will show license expired message.
2. NCachePoint will stop storing items in the cache.

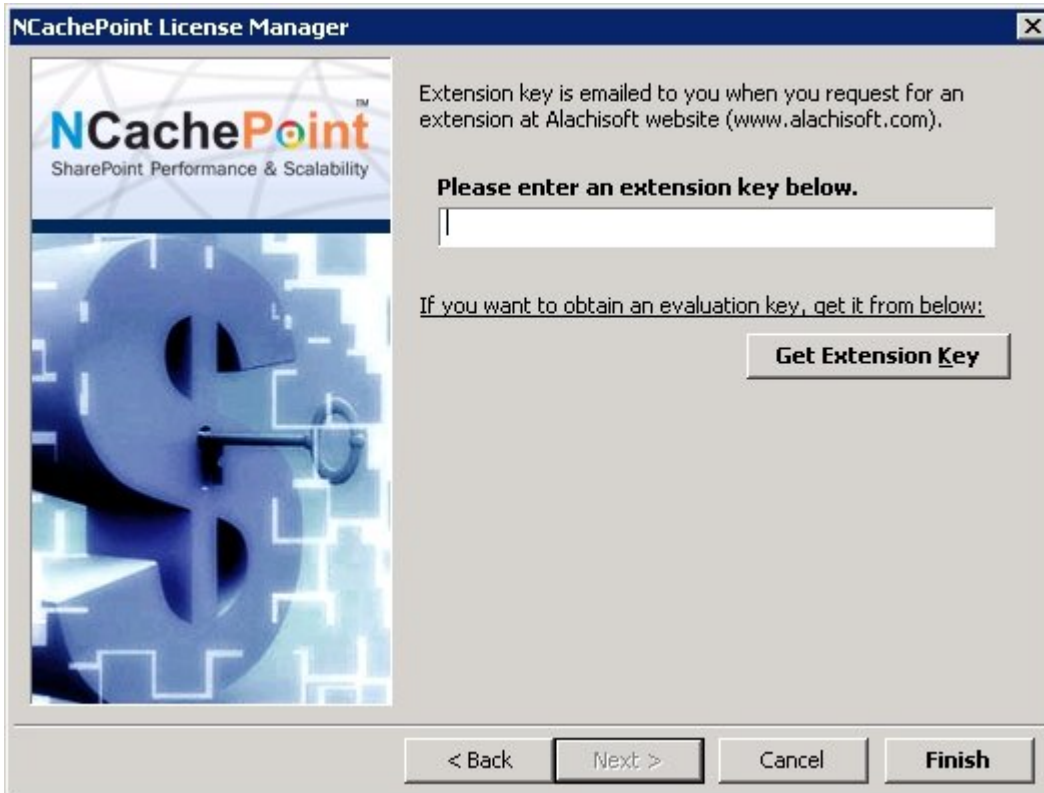
Extending Evaluation Period

When NCachePoint license expires, it is time for you to either purchase a NCachePoint license or if you need an extension to your evaluation period, you can obtain an "Extension Key" from Alachisoft Sales. Please send an email to sales@alachisoft.com and ask for an extension key.

Once you have obtained the extension key, please run "Activate NCachePoint License" program from NCachePoint program group in the Windows Start menu. When the program runs, the following page appears:



Please select the "Extend evaluation period" option and then click "Next >". Once you have clicked the "Next >" button, you will see the following window.



Please enter the extension key provided to you by Alachisoft Sales and then click on the Finish button. If the key is valid, you will be prompted with a Success message. If the key is not valid, you will be prompted accordingly.

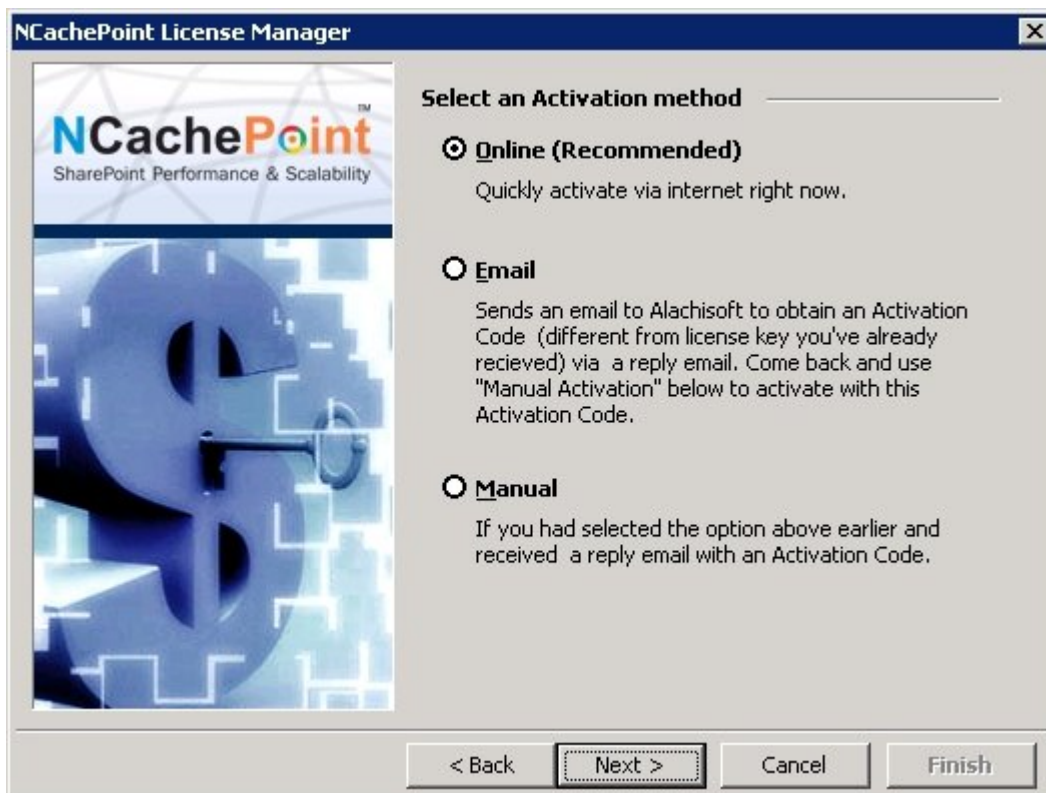
Please note that a 30-day extension is valid from the original installation date and not from the day you are trying to extend. So, if you waited for 15 extra days after the initial 60 day evaluation period to extend it, you'll only get 15 extra days extension.

Activate NCachePoint Purchased License

If you have purchased an NCachePoint license, you can activate it from the same "Activate NCachePoint License" program. Just run the program and select the "Activate purchased license key" option on the window that appears.



Click on the Next button, licensing information will be displayed. Click Next again, the following window appears:



Here you get three different options to choose from:

Online Activation

Online activation is the fastest way to activate the license but requires your machine to have an Internet access. It will ask you to enter a license key, once entered NCachePoint will be activated immediately.

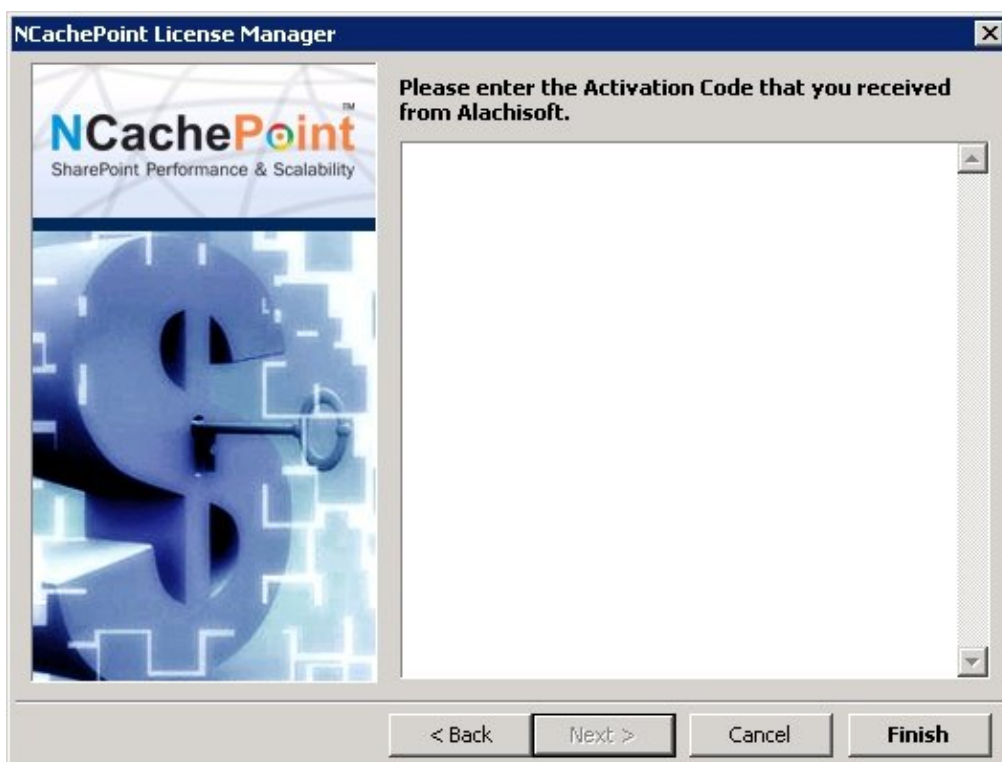
When you click the "Next >" button (as shown in the figure above), you will see the last window for activating your license. Just click on "Activate Now" and it will activate the NCachePoint license for you immediately. If for some reason you're unable to activate, an error message will appear. Your license activation can fail for a number of reasons as following:

1. Your firewall does not allow HTTP POST from Activation Program to the Alachisoft License Server.
2. You are not connected to Internet.
3. Your license key is invalid
4. You have already used up the purchased license. If this happens, please review your NCachePoint license usage and then contact Alachisoft Sales.

Email and Manual Activation

You can send an email to Alachisoft sales to obtain an Activation code. Select Email as an activation method then click Next.

Once you have received the Activation code from Alachisoft sales, return to the license activation program and choose the manual activation option. Click next, the following window appears:



Enter the activation code in the text box and press the Finish button. NCachePoint will be activated on your machine.